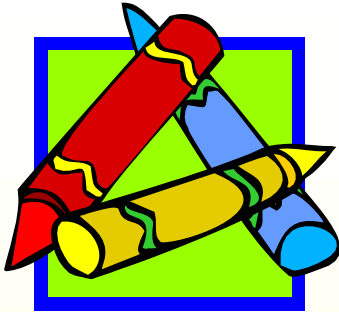


A Light Shining

News from the Ashland Area Emmaus Community

September 2011



September

Gathering
September 16

This month, we will be meeting at First United Methodist Church in Ashland.

5:30 – Board Meeting
6:30 – Dinner (potluck)
7:30 – Worship

The September Fourth Day
Speaker is Cindy Barker.

October

October 1 – Behind the Scenes Orientation meeting

October 13-16 – Men's Walk #29

October 27-30 – Women's Walk #34



A Note from the Community Lay Director

The Work of an Eternal Life

As I write this, I am thinking about the 10 year anniversary of the terrorist attack of September 11, 2001. One of the people who died that day was Father Mychal Judge. Father Judge was the chaplain of the New York City Fire Department. On the morning of the attacks, he arrived at the World Trade Center shortly after the first plane hit, and as first responders entered the North Tower, he went with them. When the South Tower collapsed, debris flew into the neighboring building, striking the Father and killing him.

At his funeral, Father Michael Duffy said:

And so, this morning we come to bury Myke Judge's body, but not his spirit. We come to bury his voice, but not his message. We come to bury his hands, but not his good works. We come to bury his heart, but not his love. Never his love.

The work Father Mychal Judge did for God made a difference. His love, his good works, his message and his spirit were eternal.

I am grateful for the work that each of you do for God – in this community, in your church, with your family and in outreach to the world. The work that you are doing will change the world, and your spirit, your message, your good works and your love are eternal.

Father Mychal carried a prayer with him at all times. I have modified it slightly (by making it corporate):

*Lord, take us where you want us to go.
Let us meet who you want us to meet.
Tell us what you want us to say,
And keep us out of your way. Amen.*

Grace,

Kim Matthews
Community Lay Director



Walk Service

Two walks are coming up next month. There are many ways that you can help:

- Cooks are needed for the men's walk. Contact Randy Lochert or Gary Holschuh.
- Agape needs donations – food, drinks, supplies.... Contact Melanie Herr.
- Remember to write Agape letters for pilgrims. They need to be at the church by Candlelight.
- At the next Gathering, you can sign up to serve for meals or help with clean up with the Facilities group.
- Sign up for the prayer vigil at www.3dayol.org.
- Make agape for the walks and bring it to the church by Thursday evening (Send-off). For agape given at meals, please make 50 pieces per walk. If you have fewer pieces, bring it anyway, and it can be used as bed agape.
- Pray for the team, for the pilgrims and for the support volunteers for the walks.
- Attend a Walk Community Events:
Thursday Send Off – 6:30pm
Saturday Candlelight – 8:00pm
Sunday Closing – 4:15pm

Send Off

We are in need of volunteers to bring food for the Men's Send Off Supper. Foods needed include Sandwiches and soup, veggie tray, brownies, cookies, cupcakes, etc. and salads such as potato salad, jello salad and pasta salad.

The items need to be at church on Thursdays at 6:15pm. A sign up sheet will be available at the next gathering; however, if you cannot make the gathering please contact Anita Fitzpatrick and let her know how you can help.

Financial Report

July 2011

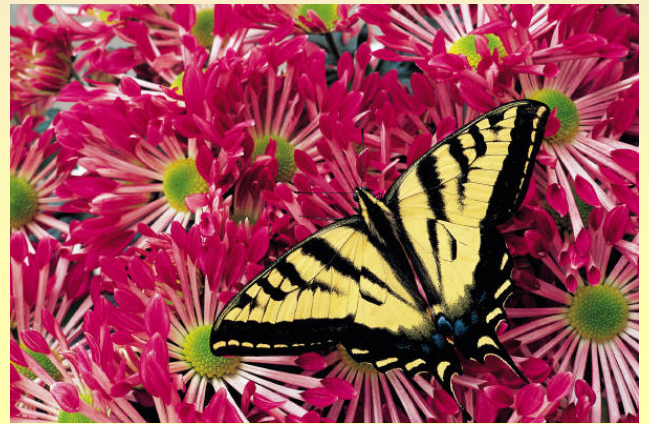
Beginning Balance: \$3,619.84

Income: \$428.00

Expenses: \$120.00

Ending Balance: \$3,927.84

Thank you for your generosity – your support enables ministry to happen through AAEC.



Fall Walk Preparation

Do you need an application for a pilgrim? You can download them at

www.ashlandemmaus.com

Mail completed applications, with a deposit check, to the address on the second page of the application. Please remember to include specific information concerning your pilgrim's dietary needs and sleeping requirements (i.e. cot or sleeping facility on the ground floor)

Thanks to Jr. Fitzpatrick who is filling in for our registrar, Jacquie Loschert, for the fall walks. Randy and Jacquie are expecting twin grandchildren!

Please submit applications for the men's walk NO LATER THAN the last day of September. We must have time to prepare for the pilgrims, and you, as a sponsor, need time to do your job well.

Prayer Concerns

	Offered by	Person (s)	Issue
Concern	Fred & Melanie Herr	Rev. Thom Malcolm	Kidney surgery in near future
Concern	Fred & Melanie Herr	Elicia Bias	Recovery from surgery and successful follow-up treatment.
Concern	JMUMC Friends	Theo Tippett	Theo died on September 12.
Concern	Emmy Skirvin	Billie Evanich	Lupus with chemo treatments. Unemployed with benefits running out.
Concern		David Kazee	Neck Surgery and recovery
Concern		Carl Webb	Back problems, possible surgery, diabetes
Joy	Cristen and Bob Pulliam		Getting to see Audrey go to preschool
Joy	Teddy Cole		Son David is cancer-free. Grandson is home from serving a year in Kuwait
Concern	Beth Schuler	Scott Jackson	Recently diagnosed with cancer in spine.
Concern	Dan Hieronimus	Norma Hughes	Waiting for diagnosis following bone marrow test.
Concern	Lloyd Keyser	Robin Vanover	Lloyd's sister had hip replacement surgery in August.
Concern	Bridget Murphy	Susan Rogers	Her mother's cancer has returned
Concern	First Baptist Family	Charlie Robinson	Critical health issues

A Resurrection Ministry

Can you list all of the ways that Gordon Scott served the Emmaus Community? I cannot. It is our calling as community members to pick up his Emmaus Cross.

It is more than likely that Gordon made your Emmaus Cross Lanyard. A group of Community members met with Mary Jo last Sunday to learn the art of lanyard-making. If you are interested in helping with this ministry, please contact Anita Fitzpatrick, Melanie Herr or Kim Matthews.

It is with thanksgiving and gratitude that I share with you that Anita Fitzpatrick will be picking up Gordon's ministry of ordering walk supplies. She will order items such as the crosses, purple books, Reunion group cards and Fourth Books for the walks. She will also gather the lanyards, label them and prepare them for the walk. Thank you, Anita, for your willingness.

In Memorium

Our own beloved

Theo Tippett

died on September 12.

Please keep Theo's family in your prayers.

2012 Community Lay Director

The Board of Directors is pleased to announce that **Donna Barber** has been nominated and elected as the Assistant Community Lay Director for 2011.

In January of 2012, Donna will become the Community Lay Director.

Please give Donna your gratitude for accepting this position, your words of encouragement, and your prayers of support. I'm certain she will be a blessing to our community.

Walk Meal Times

Thursday

6:30 – Potluck dinner – I’m sure Walk Events could use help in preparation ahead of time.

Friday

8:00 – Breakfast
12:30 – Lunch
5:30 – Dinner

Saturday

8:00 – Breakfast
12:15 – Lunch
5:40 – Dinner

Sunday

7:30 – Breakfast
12:15 -- Lunch

If you would like to help serve a meal, please come to the dining room 15-30 minutes before the time listed in this schedule. There will be work you can help to do, and by being there early, we will all be ready for the pilgrims and team.

Orientation Meeting

There will be a meeting of those involved in coordinating the behind-the-scenes support activities of the walks on October 1. I will email those involved with the time when it is set.

Those who attend include Board members in charge of Facilities, Agape, Kitchen, Walk Events, Book Table and Registration. Any who are serving as cooks are also invited to attend.



I have a question...

For this month, let’s consider ...sponsorship.

What do I need to know and to do in order to sponsor someone? What hints can you give?

- Pray about who to sponsor. The Walk to Emmaus is an experience whose goal is to revitalize and grow church leaders.
- Explain the Walk to Emmaus with honesty and clarity. Answer questions as people ask them. We are not a secret society.
- Please make sure your pilgrim indicates on the Walk application any special diet requirements and special sleeping needs. This will help the community meet the pilgrims’ needs.
- Please invite your pilgrim to experience the grace of a sequestered weekend. Invite your pilgrim to leave behind his or her cell phone, watch and camera.
- Assure the pilgrim that you will be available to help with issues at home. Explain that the weekend is not a time for visits from home. You will make sure everything at home is OK so that the pilgrim can devote his or her attention to God during the weekend.
- One of your responsibilities as a sponsor is to transport the pilgrim to the walk on Thursday and home again on Sunday. Pilgrims should not drive to the walk.
- Contact the pilgrim’s friends and family to request personal agape letters. Collect these letters and bring them to the walk.
- Be the host or hostess for your pilgrim for Send-off. Remember how you felt at Send-off? Be a reassuring presence for you pilgrim.
- Plan to attend Sponsors’ Hour to pray for your pilgrim.
- Plan to attend Candlelight to shine the light of Christ with the Community.
- Plan to attend Closing.
- Once the walk begins, please limit your contact with the pilgrim – or avoid contact.
- Serve your pilgrim by joining opportunities for service through the Community.
- Bring your pilgrim to Afterglow, Gatherings and help him or her to join a reunion group.